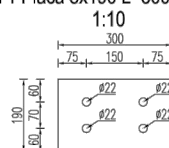
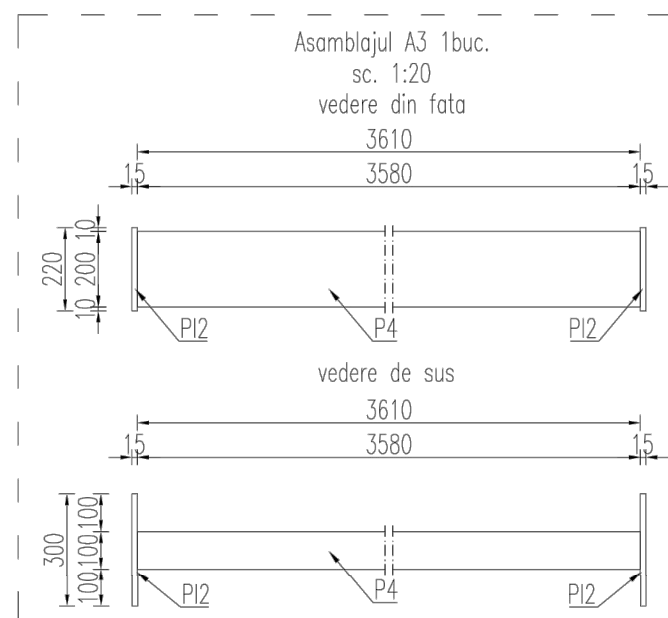
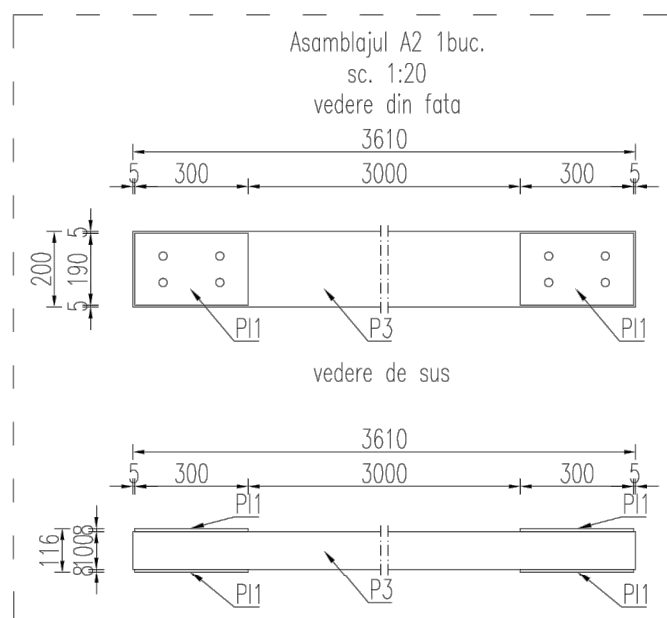
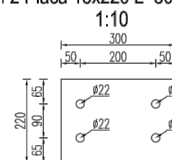


PI 1 Placă 8x190 L=300 16 buc.



PI 2 Placă 15x220 L=300 2 buc.



Pozitie	Sectiune	Numar	Lungime (mm)	Material	Masa		
					Unitate (kg/m)	Element (kg)	Total (kg)
P 1	TREC 120x80x5	13	2180	S235	14.7	32.05	416.60
P 2	TREC 200x100x8	2	6710	S235	35.1	235.52	471.04
P 3	TREC 200x100x8	1	3610	S235	35.1	126.71	126.71
P 4	TREC 200x100x8	1	3580	S235	35.1	125.66	125.66
P 5	TREC 120x80x5	7	2028	S235	14.7	29.81	208.68
PI 1	PLACĂ 8x190	16	300	S235		3.58	57.28
PI 2	PLACĂ 15x220	2	300	S235		7.77	15.54
Total (kg)							1422

Tip	Diametru (mm)	Clasa	Lungime (mm)	Numar
Ancora chimica	M20	8.8	400	32
Ancora chimica	M20	8.8	300	8

intocmit: ing. Florin Adomnoaie
sef proiect: arh. Virgiliu Polizu